

**23 Ramsons Way, Westfield Park
Cardiff
CF5 4QY**

Entrance Hall

Entered via a composite door with glazed insert into this inviting reception hall. Stairwell. Tiled floor. Radiator. Coved ceiling. Under stairs storage cupboard. Doors leading to lounge, sitting room & kitchen.

Lounge 15'3" x 10'11"

A spacious and well-presented living room with box bay window to front. Radiator. Tiled floor. Two radiators. Coved ceiling. Feature archway access into



Dining Room 9'7" x 9'7"

With Upvc 'French' style glazed doors leading out to rear garden. Radiator. Coved ceiling. Paneled door leading to



Kitchen 17'1" x 9'10"

A light and bright luxury fitted kitchen housing a large selection of quality white colored Gloss wall and base

units incorporating ample marble effect worktop space with stainless steel sink unit & mixer tap, integrated fridge, freezer, five burner gas hob, electric and microwave ovens & extractor canopy. Plumbing for washing machine. Window & Upvc Glazed door to rear. Tiled floor running directly into sitting room. Breakfast bar. Contemporary radiator



Sitting Room 18'8" x 9'2"

An excellent sized family room with window to front. Coved ceiling. Contemporary Radiator.

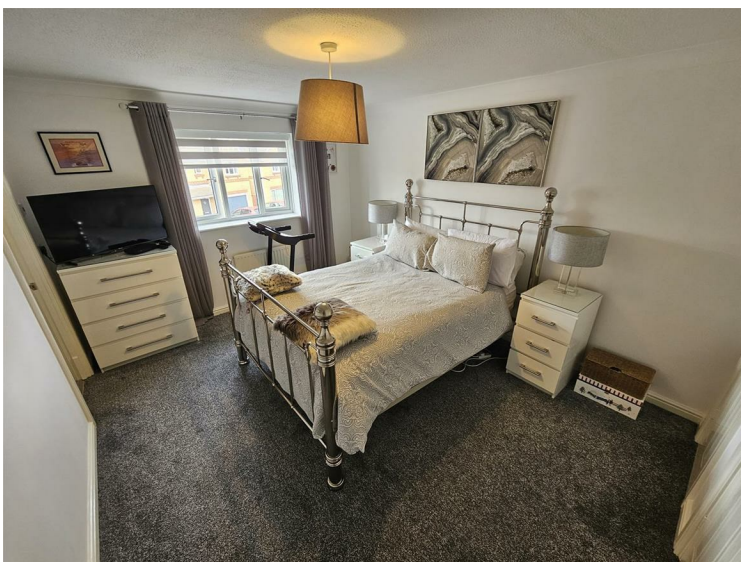


First Floor Landing

Doors off leading to four bedrooms, bathroom W.C. & Linen cupboard with radiator. Loft space

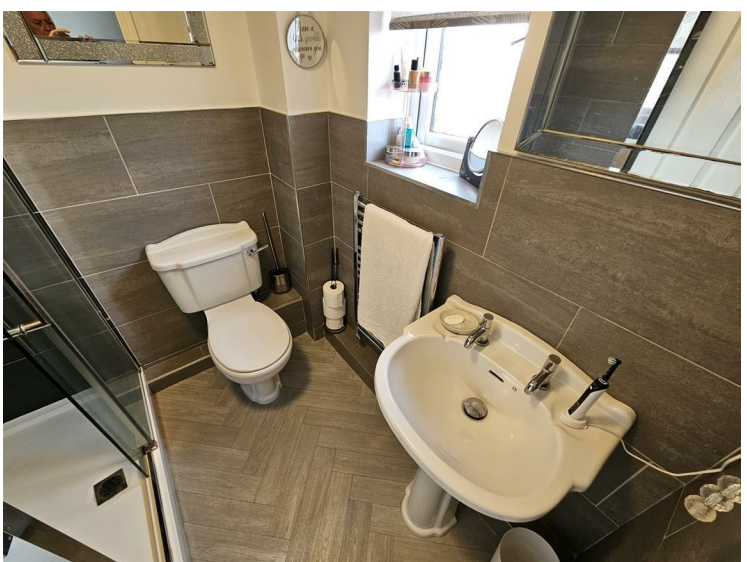
Master Bedroom 13'4" (min) x 10'8"

A most spacious double bedroom with fitted wardrobes. Radiator. Window to front. Door leading into



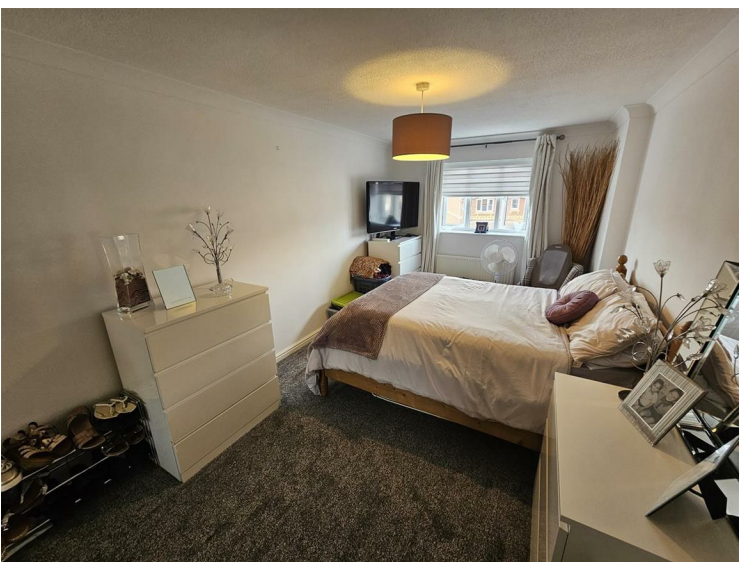
En Suite Shower Room W.C.

A refurbished room with partially tiled walls and suite comprising of low-level W.C. Pedestal wash hand basin. Glazed & tiled cubicle incorporating a chrome mains fed mixer shower. Window. Chrome heated towel rail. Vinyl floor. Window



Bedroom Two 10'8" x 9'8"

Double bedroom with window to rear. Radiator



Bedroom Three 16'5" x 9'4"

A great sized third double bedroom. Mirror wardrobes. Radiator. Window to front



Bedroom Four 9'4" (max) x 9'3" (max)

A decent sized single bedroom. Window to rear. Radiator

Bathroom W.C.

Tiled with modern suite comprising of low-level W.C. Pedestal wash hand basin. Paneled bath. Tiled floor. Window. Chrome heated towel rail



but are intended as a guide to the property only, with measurements being approximate and usually the maximum size which may include alcoves, recesses or otherwise as described, and you must NOT rely on them for any other purpose. The appearance of an item in any photograph does not mean that it forms part of the property or sale price. Always contact the appropriate Hoskins Morgan branch for advice or confirmation on any points.

TENURE

The vendors advise the property to be Freehold. Hoskins Morgan would stress that they have NOT checked the legal documents to verify the status of the property, and the buyer is advised to obtain verification from their solicitor or surveyor.

VIEWING

Strictly by prior telephone appointment direct with the agents - telephone 02920 553056. Open 6 days a week. Opening Hours: Monday - Friday 9.00am - 5.30pm, Saturdays 9.00am - 4.00pm.

Energy Efficiency Rating		
	Current	Potential
Very energy efficient - lower running costs		
(92 plus) A		
(81-91) B		
(69-80) C		
(55-68) D		
(39-54) E		
(21-38) F		
(1-20) G		
Not energy efficient - higher running costs		
England & Wales	EU Directive 2002/91/EC	

Environmental Impact (CO ₂) Rating		
	Current	Potential
Very environmentally friendly - lower CO ₂ emissions		
(92 plus) A		
(81-91) B		
(69-80) C		
(55-68) D		
(39-54) E		
(21-38) F		
(1-20) G		
Not environmentally friendly - higher CO ₂ emissions		
England & Wales	EU Directive 2002/91/EC	

Front Garden

Based in both brick and tarmac offering off road parking for three cars

Rear Garden

Stunning well stocked and tended landscaped garden with offering total privacy. Large Flagstone based area leading to lawn. Timber 'Pagoda' type structure over an artificial lawn. Lovely natural colors from all types of flowers and plants.



FIXTURES AND FITTINGS

Only those items specifically mentioned in these sales particulars are included within the sale price, any other item being expressly excluded from the sale. Hoskins Morgan have NOT tested any apparatus, equipment, fixtures and so cannot verify they are in working order or fit for their purpose. The buyers are advised to obtain verification from their solicitor or surveyor.

PROPERTY MISDESCRIPTIONS ACT 1991:

These particulars have been prepared with care and approved by the vendors (wherever possible) as correct,

sales@hoskinsmorgan.co.uk

www.hoskinsmorgan.co.uk

**hoskins
morgan**

property sales lettings property management

498 Cowbridge Road East,
Victoria Park,
Cardiff
CF5 1BL

Tel: 029 2055 3056

Fax: 029 2056 5761



23 Ramsons Way, Westfield Park, Cardiff, CF5 4QY



Situated At This Very Popular Development To The West Side Of Cardiff Can Be Found This Very Substantial And Superbly Presented Four Bedroomed Detached House Boasting A Quite Lovely Mature Rear Landscaped Garden. Thousands Of Pounds Have Been Spent On This Desirable Home With Generous Sized Family Accommodation Comprising Of Entrance Hall, Lounge Open To Dining Room, 17' Luxury Fitted Gloss Kitchen With Open Access To 18' Family Sitting Room, The Afore Mentioned Bedrooms, Master En Suite Shower Room W.C. & Family Bathroom W.C. Upvc Windows & Doors. Gas Central Heating. Lovely Decoration Throughout. Must Be Viewed! Council Tax Band 'E'

£410,000 Freehold